



KANSAS STATE UNIVERSITY | Agricultural Economics



From the desk of Dr. Allen Featherstone

This spring semester has been a step closer to normal with more students on campus for classes, but still a mix of hybrid learning. We miss seeing everyone on a daily basis!

In this enewsletter, we share stories about Dr. Jesse Tack being selected as editor of a prestigious journal, highlight several student achievements, announce the 2021 Center for Risk Management Education and Research Fellows, introduce you to our Land Use Survey Center and provide a list of upcoming events. Among those events, we are planning to host our Scholarship Banquet and Department Tailgate in the fall. More information about the banquet and tailgate will be provided in the next enewsletter.

We are excited to share the progress on the construction of our new Undergraduate Student Center that was made possible by Dr. Arlo and Diane Biere. This is going to be a beautiful, modern space for our undergraduate students, faculty and staff! We appreciate the dedication and engagement of our faculty, alumni and outside supporters. Thank you to our generous donors who give back to the Department. If you have an interest in giving, please contact me about departmental needs or go to our Give Back page to contribute.

Please take time to learn more about the activities of our department. We also encourage you to share your career and family developments so we can keep your fellow alumni informed. Please email me at afeather@ksu.edu or Mary Bowen, our communication coordinator, at mjbowen@ksu.edu with information you would like to share with your fellow alumni.

Go Cats!

Dr. Allen Featherstone

Department Head, Professor, Master of Agribusiness Program Director

Dr. Jesse Tack selected as Editor for AJEA

Dr. Jesse Tack, associate professor for the Department of Agriculture Economics, has been selected as an editor for the American Journal of Agricultural Economics (AJAE).

The AJAE is a peer-reviewed journal that employs economists, like Dr. Tack, to analyze public policy and consumer behavior. The journal focuses on publishing empirical and theoretical papers in finance and other closely related fields.

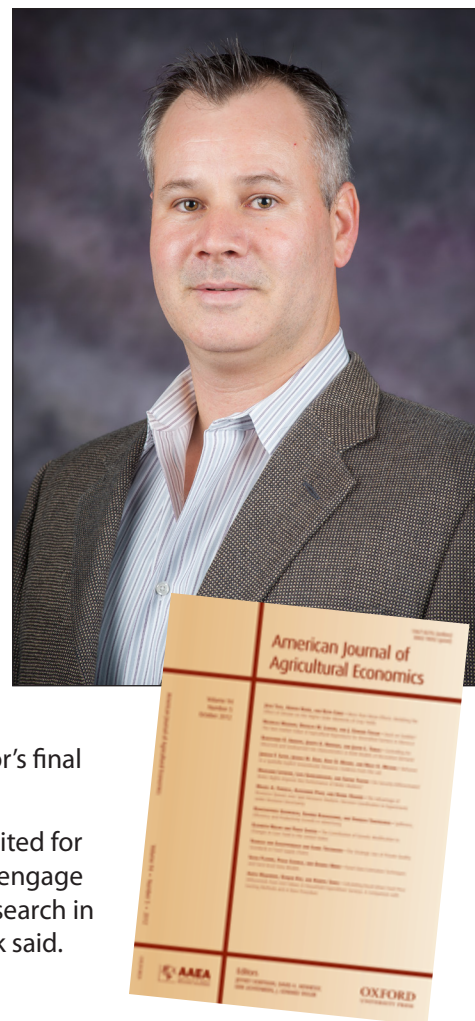
"The journal is considered to be the leading journal in Agricultural Economics and highlights research that can affect both agricultural policy and on-the-ground decision making," Tack said.

To be selected as an editor for the AJAE an application must be submitted to the Agriculture and Applied Economics Association for review. Dr. Tack, will work with a team of faculty that includes Dr. Jill McCluskey, Washington State University; Dr. Marc Bellemare, University of Minnesota; and Dr. Amy Ando, University of Illinois. Tack's term will be a four-year term starting January 1 of 2022.

AJAE "Dr. Tack is the first faculty member from Kansas State University to be selected as an editor. We have had several members of our faculty serve as associate editors, but none have served as editor," Dr. Allen Featherstone, Agricultural Economics Department Head, said. "Certainly this is a great honor for Dr. Tack, but also for the Department as a whole. This type of honor continues to validate the Department's research ranking #21 for Agriculture Economics Departments in the World according to Research Papers in Economics (RePEC) managed by the St. Louis Federal Reserve Bank."

Dr. Tack's main responsibilities will be to coordinate reviews for submitted manuscripts and to ensure the integrity of the peer review responses. Editors make the final decision on whether manuscripts will be published in the AJAE. A combination of recommendations of referees and the editor's evaluation of the paper are the deciding factors for the editor's final decision.

"I am genuinely excited for the opportunity to engage with the leading research in the profession," Tack said.



Land Use Survey Center Needs Your Input

With support from the Kansas Department of Agriculture and the Kansas Department of Revenue, the Land Use Survey Center has exciting opportunities to pursue research on the agriculture industry in Kansas. Most of the research focuses on land leasing, land values, and production costs.



That's where you come in! Your participation in surveys makes maintaining, growing, and developing the industry possible. Currently, we are conducting three surveys. Two of the surveys focus on land leasing for irrigated farms and bluestem pasture acreage. The third, in conjunction with the Kansas Horse Council, focuses on the equine industry. Gathering this information is essential to

developing a strategic plan for the future of the agriculture industry in Kansas. We need your help to make this happen. You are the source for this information. Your participation ensures that accurate information is disseminated to the agriculture industry in Kansas.

Please follow this link, www.tinyurl.com/bluestem2021 to complete the Bluestem Pasture survey online.

Please follow this link, www.tinyurl.com/irrigate2021 to complete the Irrigated Farm Leasing survey online.

Please follow this link, www.tinyurl.com/equineks to complete the Kansas Horse Council survey online.

If you prefer a paper copy of any of these surveys, or have any questions, please do not hesitate to contact Leah Tsoodle at ltsoodle@ksu.edu or 785-630-1999. We would really like to hear from you!

Undergraduate Student Center Update

Last summer, Dr. Arlo Biere, Faculty Emeritus, and his wife, Diane, pledged money to create an Undergraduate Student Center that is welcoming for students and student recruits. Dr. Biere's vision is now becoming a reality. Construction on the new Undergraduate Student Center started in early December 2020 and is nearing completion.

Taking the place of four previous offices/student lounge space, the new center will provide a small conference room, workspace and offices for Dr. Elizabeth Yeager, Director of Undergraduate Programs; David Lehman, Instructor and K-State's National Agri-Marketing Association (NAMA) team advisor; and Cherie Hodgson, Undergraduate Academic Program Coordinator.

Be watching for a ribbon-cutting and grand opening in the next few months!

If you'd like to help move the Department forward, there are several renovation projects for the future of the Agricultural Economics Department and the 3rd Floor of Waters or other opportunities to give depending on your interest including:

- faculty endowments
- graduate scholarships
- facility improvements
- undergraduate scholarships

Dr. Biere chose to contribute to facility improvements, because his passion has always been for undergraduate students, and he wants to create a space that is modern and inviting.

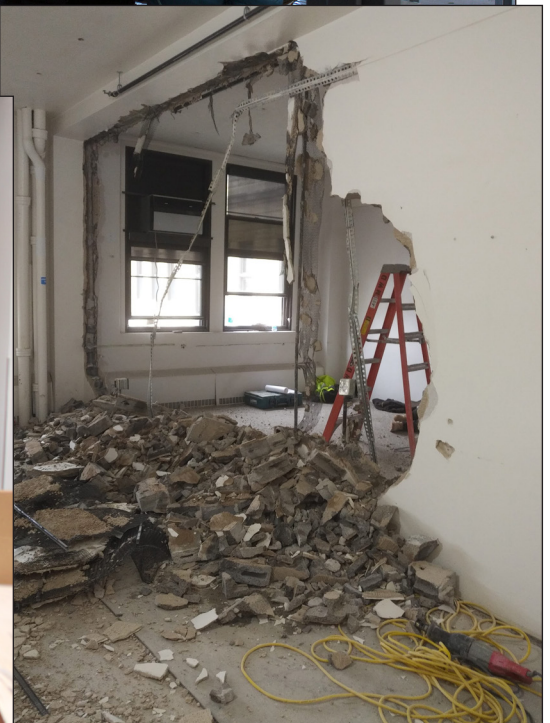
Contact Dr. Allen Featherstone, (afeather@ksu.edu or 785-532-6702) Agricultural Economics Department

Head, if you would like to visit about Departmental needs.

You can donate directly to some of the Ag Econ funds online at <https://www.ksufoundation.org/agriculture/index.html>, but not all options are listed.

Please remember if you decide to donate to the Department, your employer may match your contribution dollar for dollar. You can check with either your company or Kim Schirer (kims@ksufoundation.org) at the KSU Foundation to determine if your company has a matching program, and how to make sure the Agricultural Economics Department benefits from that matching contribution.

See more construction photos online at <https://www.ageconomics.k-state.edu/news/newsletters/spring2021newsletter/undergradcenter.html>



Ag Econ Students Selected for Kansas Food and Agricultural Policy Fellowship Program

Sanders Barbee and Michaela Forst, two students from the Agricultural Economics Department, have been chosen for the Kansas Food and Agricultural Policy Fellowship Program, or Ag Fellows. The Ag Fellows program is a leadership opportunity for Kansas students studying an agricultural field to better serve the state's food and agricultural industry.

"I am looking forward to this because I know it will be helpful and necessary information for future sorghum growers to have. I hope to learn more about ag policy at both State and Federal levels," Barbee said.

The Ag Fellows will complete two separate experiences: one at the state level and one at the federal level. They will gain a firsthand understanding of policy and regulatory challenges facing the food and agriculture supply chain, be challenged to develop strategic solutions to meet these challenges, and will participate in the policy process during the program.

While this experience better prepares them to enter the workforce serving the Kansas food and agriculture industry, it also enhances their ability to advocate for laws and regulations that allow Kansas and the food and agriculture community to thrive and grow.

Barbee and Forst had to go through an intense application and interview process before being selected. In her application essay, Barbee chose to write about food insecurity in undernourished countries.

Barbee is a sophomore in agricultural economics with a specialty in pre-law. She will serve as the conservation fellow with Kansas Grain Sorghum. Barbee is a member of the K-State University Marching Band, secretary for Minorities in Agriculture, Natural Resources Related Sciences, or MANRRS, and works as a peer mentor in K-State's Office of Diversity and Multicultural Student Affairs.

Forst is a junior in agricultural economics and global food systems leadership. Forst will work with Dairy Farmers of America. She serves as a College of Agriculture Ambassador and as a member of the Student Advisory Leadership Team for the Food Security Scholars Program.



Sanders Barbee



Michaela Forst

Students selected to lead Clovia House

Two agribusiness students, Hannah Ballard and Kaitlin Bell, were recently elected as President and Vice President of the Alpha of Clovia 4-H Cooperative Leadership House. Women of Clovia live together in a cooperative manner – sharing housework and later responsibilities to reduce the overall cost of living.

The opportunity to live among women with similar backgrounds, while reducing housing costs, focusing on academics, philanthropy and social activities is the main reason many young women apply to Clovia.

"Through my involvement in 4-H and FFA, Clovia has been a great fit for me, allowing me to connect with other girls from across the country who grew up the same way I did," Bell said.

Ballard is sophomore in Agribusiness. She grew up in Madison, Kansas on a cow calf, custom grazing, and row crop operation. Growing up she was actively involved in 4-H. At K-State, she has been on the wool judging team, a part of Quest freshman honorary society and the Agricultural Economics and Agribusiness club.

Bell is a senior majoring in Agribusiness with a minor in Animal Science and Industry. In addition to her involvement with 4-H and FFA, she was also a member of the Pennsylvania Junior Angus Association while growing up. At K-State is a member of the Meat and Livestock Judging Teams.

With COVID-19 making gatherings difficult for many organizations, Clovia has made an effort to give house tours to show girls what it's like to live in the house. Both Ballard and Bell have been working on plans to host a family weekend during the upcoming fall semester and a hospitality weekend where prospective members can come and visit with active members to help recruit new members. Clovia will be also hosting a national meeting with its sister chapter, Beta of Clovia, from the University of Minnesota.

"I am excited to serve and represent Clovia as a whole. Being a leader during this time will be challenging, but rewarding. I look forward to learning and growing as I go through my term as President," Ballard said. "The best part of Clovia is the girls! They are truly such a good group of driven, motivated and inspiring young women."

Bell who grew up on a small cow-calf operation in Southeastern Pennsylvania and the relationships with her housemates are a big part of why she chose to serve as Vice President.

"For me, the friendships I have made are by far the most rewarding. Being 1,200 miles away from home, living here has given me an amazing group of young ladies that have become some of my closest friends," Bell said. "I am extremely excited to work with Hannah and the rest of the officer team throughout the year to help welcome girls into the house and make friendships that will last a lifetime."



Hannah Ballard



Kaitlin Bell

CRMER Announces 2021 Fellows

The Kansas State University Center for Risk Management Education and Research announces its ninth class of student fellows. CRMER brings together students, faculty and industry to advance risk management skills and knowledge. The multi-disciplinary program is committed to identifying, maximizing, mitigating and recognizing how risk impacts our global society.

A group of 51 students were selected from a competitive pool of applicants to participate in the risk management student fellowship. Of the 51 students selected, 15 were from the AgEcon Department.

- **Amber Oerly**, Agricultural Economics, Policy Specialty, Booneville, MO
- **Courtney Sherbert**, Agribusiness, Morganville, KS
- **Dalton Springer**, Agricultural Economics, Pre-Law Specialty, Waller, TX
- **Evan Rosenow**, Agricultural Economics, Clay Center, KS
- **John Mayer**, Agricultural Economics, Aledo, TX
- **Kaleb Guilfoyle**, Agribusiness, Fort Scott, KS
- **Kristopher Wagner**, Agricultural Economics, Satanta, KS

- **Lauren Benavidez**, Agribusiness, Esteli, Nicaragua
- **Matthias Brouk**, Agricultural Economics, Finance Specialty, Manhattan, KS
- **Michaela Forst**, Agricultural Economics & Global Food Systems Leadership, Marysville, KS
- **Molly Soye**, Agricultural Economics, Elmdale, KS
- **Sage Collins**, Agricultural Economics & Global Food Systems Leadership, Chanute, KS
- **Shymel Townes**, Agricultural Economics, Finance Specialty, Wichita, KS
- **Tanner Ukele**, Agribusiness, Finance Specialty, Sabetha, KS
- **Walker Clawson**, Agricultural Economics & Animal Sciences, Meade, KS

"We welcome the largest group of student fellows in program history into CRMER," said Ted Schroeder, director of the center and professor in the Department of Agricultural Economics. "We look forward to working with this talented group of students as they engage in a hands-on educational experience, fully integrated with faculty and industry partners from several fields."

The new student fellows begin their program in August 2021.



Upcoming Events

Farm Financial Management Online

Available Now

Self-paced online course for farmers and ranchers of all types. Six Lessons: Record keeping, Balance Sheet, Income Statement, Cash Flow, Managing Family Living Expenses, Goal Setting. Three case farm activities to apply what you learn. Contact Robin Reid for more information.

K-State Commencement

May 14-16, 2021,
Manhattan, KS

Risk and Profit Conference

August 19-20
Manhattan, KS

Agricultural Economics Scholarship Banquet

September 17, 2021,
Manhattan, KS

Agricultural Economics Tailgate

September 18, 2021,
Manhattan, KS
KSU vs Nevada

CRMER Tailgate

October 2, 2021,
Manhattan, KS
KSU vs OU

See more Agricultural Economics events at <https://www.ageconomics.k-state.edu/news/index.html>