



From the desk of Allen Featherstone

As we fly through April, we are preparing to send an outstanding class of students to the "real world". This spring has brought continued success to our department. Our undergraduate students have a 98 percent employment rate with an average starting salary of nearly \$45,000 for our department.

Part of this success is due to our department's dedicated supporters and alumni. As tuition increases, and our state support remains level in nominal terms, your continued commitment is even more essential and appreciated to continue our department's success and ranking at the top among other agricultural economics departments in the country.

In September, we will honor a new distinguished alumni member to recognize at our annual scholarship and awards banquet. We hope you will join us for the scholarship banquet Friday, September 18 and at the tailgate event in Cat Town before the Football game September 19 against Louisiana Tech.

Our faculty continue earn academic and research honors among their peers at the University and national level. In this newsletter you will learn about honors received by Nathan Hendricks, Bryan Schurle, Christine Wilson, Vincent Amanor-Boadu, Tim Dalton, and several others receiving USDA grant dollars to support economic growth in rural communities.

Our students are competing for and receiving national, university and college awards. This year's College of Agriculture Ambassador's include 8 of our department's students, of 37 total. Justine Floyd is recognized for her outstanding efforts for leading multiculturalism and diversity on campus. Halli Wigger earned conference recognition and the 55th Midwest Model United Nations Conference.

Other highlights include an introduction to new faculty members Terry Griffin and Beth Yeager, updates from our graduate students, alumni, department programs, events, and more!

Please take time to learn more about the activities of our department. We also encourage you to share your career and family developments so we can keep your fellow alumni informed. Please email me at afeather@ksu.edu or Amanda Erichsen, our communication coordinator, at aerichsen@ksu.edu with information you would like to share with your fellow alumni.

Go Cats!

Dr. Allen Featherstone, Department Head,
Professor, Master of Agribusiness Program Director

- 2 • New Faculty Members
- 4-8 • Undergraduate News
- 6-9 • Graduate Student News
- 10 • Department hosts three Zamorano interns
- 11-13 • Faculty News
- 14 • Alumni News
- 16 • Department Updates
- 18 • KSU Foundation Fund Spotlight
- 19 • Scholarship Banquet & Tailgate Weekend
- 19 • Upcoming Events

Terry Griffin

He's seen his share of the Midwest by growing up in Arkansas, working at the University of Illinois and studying for his doctorate in Indiana. Now, [Terry Griffin](#) has joined the Kansas State University Department of Agricultural Economics as an assistant professor and cropping systems economist.

Griffin's new position entails 80 percent extension work and 20 percent research in cropping systems economics and precision agriculture. With these responsibilities, he is looking forward to working with the Kansas Ag Research and Technology Association, a group that strives to keep up with and share trends in production agriculture. Griffin is interested in technology and is excited to see how it can combat the unique agricultural problems Kansas farmers deal with.

Griffin will also represent the department on the precision agriculture multidisciplinary team. "K-State is now one of the few (maybe only) universities with a truly interdisciplinary team devoted to precision agriculture," Griffin said. "There are many issues with precision agriculture and big data that need to be addressed in Kansas as well as across the United States. One enticing aspect of K-State was the existing interdisciplinary precision agriculture team including the Biological and Agricultural Engineering and Agronomy departments."

K-State caught Griffin's attention because he was looking for a top-ranked department at a university that excels at interacting with agricultural clientele. The balance of research and extension mixed with the opportunity to work with graduate students also contributed to his decision to be a Wildcat. Griffin is excited to be joining the K-State family.

"I've been away from the departmental culture for nearly a decade; and look forward to hallway conversations with some of the best minds in agriculture and attending Brown Bag seminars to learn fresh perspectives. Essentially I am excited to be in an 'iron sharpens iron' environment again."

Manhattan has already been a great experience for the Griffin family. Ty, 12; Austin, 9; and Briley, 7; love the KSU Chess Club events. Terry and his wife, Dana, appreciate the accessibility of Manhattan businesses and attractions.

Griffin grew up in Greene County, Arkansas, near Paragould. Both his bachelor's degree in agronomy and master's degree in agricultural economics came from the University of Arkansas. Following these degrees, he worked as a regional economist for University of Illinois Extension. He then received a doctorate in agricultural economics, with a specialty in farm management and spatial econometrics, from Purdue University. After his doctorate, Griffin went back home to Arkansas as a cropping extension economist at the University of Arkansas before joining the private sector at Cresco Ag.



Check Out our Other Recent Headlines Online!

Other articles of interest about or authored by our agricultural economics faculty, alumni and students are available on our [news](#) and [news archive](#) pages.

- Irish beef now available in U.S. for first time in 15 years
 - K-State Agricultural Economist Following Avian Influenza Developments
 - Meat and Poultry Recalls: What Food Firms and Investors Should Know
 - Tonsor and Schroeder Examine Economic Implications of E. coli Vaccine Use
 - Service-oriented Leadership Key for Kays
 - Chuck Munson, Distinguished Alumni, and Wife Deanna Featured in Kansas Profile Article
- ... And more!

Elizabeth Yeager

A familiar face will be seen re-circulating the hallways, although this time as part of the Department of Agricultural Economics faculty, rather than as a student. [Elizabeth Yeager](#), a department alumna, joined the faculty as an assistant professor in January.

Yeager's appointment is 60 percent teaching and 40 percent research, two areas she is highly anticipating. She is excited about collaborating with graduate students and faculty on research projects and teaching Farm and Ranch Management.

"I am most looking forward to teaching AGEC 308 Farm and Ranch Management in the fall," Yeager said. "We have a large population of students from Kansas and many that maintain an active role in their family's farm or ranch or hope to work in the agricultural industry in the future. This course provides a great foundation for our students in this area. It is also an area I am interested in from a research standpoint as well."

Yeager's research goals include working with the Kansas Farm Management Association research data on farm efficiency and risk management, and studying student classroom performance and extra-curricular activity effects on success.

K-State was a clear choice for Yeager and her fiancé, Eric. Both consider K-State home. Yeager received her bachelor's degree from K-State in agricultural economics with an emphasis in farm management and a minor in animal science. She continued her K-State education, receiving her doctorate in agricultural economics.

The department attracted her because of its strong history in research and quality teaching in farm management, production and finance; all subjects Yeager specialized in for her doctorate and still finds to be valuable in Kansas.

"Now is also an exciting time for the department as we are hiring a number of faculty positions to replace key faculty retirements," Yeager said. "This really provided me with an opportunity to showcase my teaching and research efforts and make a strong impact right away."

Prior to K-State, Yeager was an assistant professor at Purdue University for three years, where she taught agribusiness marketing and research method courses. She advised the Purdue National Agri-Marketing Association and was the honors coordinator for Purdue's Department of Agricultural Economics. Yeager partnered with both the Center for Food and Agricultural Business and the Center for Commercial Agricultural at Purdue University on the large commercial producer survey and a risk management initiative sponsored by the Indiana Soybean Alliance.

Yeager is originally from Cottonwood Falls in Chase County. Much of her family still lives in that area, where her grandparents are active in the livestock industry.

"Eric and I are excited to be back in Manhattan, Kansas, where we first met," Yeager said of moving back. "I love the pride the community has for the university. It is a wonderful city with a small town feel."



Justine Floyd Recognized for Enhancing Multiculturalism and Diversity on Campus

Justine Floyd, senior in agribusiness, received the Commerce Bank Presidential Student Award for Distinguished Services in Enhancing Multiculturalism at Kansas State University.

Zelia Wiley, assistant dean of diversity and director of diversity programs in the College of Agriculture, nominated Justine for the award, which was established in 1997 to recognize outstanding individual contributions to diversity enhancement.

"I nominated her because of her academic excellence and compassion for social justice for all," Wiley said.

Following the nomination, Floyd presented for 10 minutes on the subject of Multicultural Student Organizations (MSOs) bridging and bonding on K-State's campus to a selection committee consisting of at least 10 K-State faculty and student leaders. Following her presentation were 10 minutes of Q & A from the selection committee. To demonstrate how MSO's bridge and bond, Floyd spoke to the recruitment, retention and graduation of multicultural students as a result of being members and leaders of various MSOs such as the Black Student Union (BSU), Asian American Student Union (AASU), Hispanic American Leadership Organization (HALO) and many more. For many multicultural students, their first college experience is Multicultural Academic Program Success (MAPS). This is a 6-week academic and professional developmental program for high school graduates attending K-State in the fall in the Colleges of Agriculture, Business, and Engineering. Because of this, Floyd suggested that MAPS was the first step on the bridge, followed by joining MSOs and by finally receiving their mortarboard and graduating. Thus, the theme, "From MAPS to Mortar Board."



"Justine has demonstrated exceptional character, leadership, and service toward the enhancement of multiculturalism and diversity in the Department of Agricultural Economics, the College of Agriculture, and Kansas State University," said Andrew Barkley, agricultural economics professor and Floyd's advisor.

"Justine is dedicated to the service of others, an outstanding role model and mentor to other students, and a true pleasure to work with and be around."

A reception honored Floyd after the committee selected her for the award; the reception video can be [viewed here](#). Floyd gave a second presentation at the ceremony to talk about the importance of multiculturalism and diversity and how the two subjects, though different, work together.

"Being a student leader at Kansas State has taught me to understand and value the difference between diversity and multiculturalism. More importantly, it has taught me that when you pair the two, there lies great potential for success," Floyd said in her speech. "I believe that multiculturalism and diversity are a dynamic duo that have been and will continue to be the framework by which students on this campus find themselves."



Continued on next page

She gave thanks to Commerce Bank for their support of K-State's diversity initiatives; her parents, Tarrance and Jacqueline; Bryon Williams, assistant director of undergraduate admissions; Zelia Wiley; Andrew Barkley; Brandon Clark, program assistant in the office of diversity; and Myra Gordon, associate provost in the office of diversity.

Floyd was joined at the reception by her parents, friends, various department representatives, members of the Black Student Union, and advisors and members of Minorities in Agriculture, Natural Resources and Related Sciences (MANRRS). A representative from Commerce Bank and Pat Bosco, Dean of Student Life, also attended.



"It has been a pleasure having Justine as a student in our college and most specifically as a student in the K-State MANRRS chapter," Wiley said. "She takes pride in her personal demeanor and takes responsibility for actions. I witnessed her growth both personally and academically. I am very proud she will become a graduate of our college and represent the diversity programs office."

"I felt really honored and I felt overwhelmed. I feel like I won an award for something I actually care about... It wasn't so much academic as it was social activities. It felt like I was actually making a difference," Floyd said.

She described the process of receiving the award as fun and challenging. In May, Floyd will be the third African-American to receive a Bachelor of Science in agribusiness from the Department of Agricultural Economics. She has also been a communications assistant for the department since June 2014.

Previous page, top: Floyd spoke about the dynamic duo of multiculturalism and diversity during her speech at the award ceremony.

Previous page, from left to right: Barkley, Department Head Allen Featherstone and Wiley joined Floyd at her award ceremony.

Above, from left to right: Department representatives Arlo Biere, professor emeritus; Jeff Williams, professor; and Cherie Hodgson, academic coordinator; were on hand to congratulate Floyd at the award ceremony.

New College of Agriculture Ambassadors include 8 from Department of Agricultural Economics

On February 24, 2015, 34 Kansas State University College of Agriculture students joined the ambassador team. Newly selected students from the Department of Agricultural Economics include, Nolan Allison, Eureka; Coleman Forst, Marysville; Abigail Horn, McCoy, Colorado; Anna Setter, Humboldt (previous four at right);



Kristin Stiebe, Kinsley; Halli Wigger, Troy; and Youwei Yang, China; and Rachel Zimmerman, Ulysses (pictured on page 7).

The ambassador team aids in recruitment of prospective students and will represent the College of Agriculture at various events throughout the year. More than 800 prospective students are anticipated to visit the college this year to tour campus, sit in on classes and hear personal K-State stories from the ambassadors.

Continued on page 7

Halli Wigger Earns Delegate's Choice Award at 55th MMUN Conference



One Kansas State University student brought home outstanding recognition from the 55th Midwest Model United Nations (MMUN) Conference. Halli Wigger, freshman in agricultural economics from Troy, Kansas, earned the delegate's choice award at the conference, which is an all-collegiate event where students work with pressing international issues.

Other students at the conference selected Wigger for the award based on her representation of Cuba on the International Fund for Agricultural Development committee, which comprised student representatives of United Nations countries from around the world.

"I was very pleased to have won an award considering all the time and effort that I put into it," Wigger said. "It was very rewarding to have that kind of payoff, especially at my first conference."

Wigger brought the committee together and led the organization of ideas to compose policy based on the specific topics—hunger, food, and nutrition security in post-2015 development framework and the international year of family farming. The students chose to implement education and trade programs, improve technology at the production level and advocate rural farming to support the topics.

The group attended sessions up to 12 hours per day to discuss the topics and draft the policy, which Wigger typed and submitted it for her committee, then made the necessary corrections. The policy was then presented at a plenary session.

When Wigger told Taylor Bates, a student in political science, about her interest in international agriculture, Bates introduced her to MMUN. The conference provides a hands-on perspective of world politics to broaden student awareness.

Because they represent a country's delegation, the students experience the complexities of international relations.

Wigger went with 22 other K-State students to the conference, which was Feb. 18-22 in St. Louis. She was one of a few agriculture students in attendance at the conference among political science and pre-law students from 37 colleges in the Midwest.

She recommends that anyone interested in international agriculture or business should register for the conference because it is a great way to get experience in these areas. Learn more about the conference.

Wigger has already paved a path to success in her first year at K-State. She joined the College of Agriculture Ambassador team in February and is a member of K-State's National Agri-Marketing Association team and National Society for Collegiate Scholars. She is also in Sigma Alpha, the professional agricultural sorority.

Wigger aspires to join the Peace Corps or work for the U.S. Department of Agriculture so she can reach out to developing countries and help improve rural agriculture strategies.

Graduate Student Achievements

Veronica Pozo – Outstanding Dissertation Award of 2014. "Effects of Meat and Poultry Recalls on Firms' Stock Prices."

Major Professor: Ted Schroeder. 2015.

Claire (Luensmann) Hilscher – Outstanding Thesis Award of 2014. "Implied Volatility Spillover in Agricultural and Energy

Markets." Major Professor: Ted Schroeder. 2015.

Melissa Lynes – Richard Elmore Brown Outstanding College of Agriculture Graduate Student Teaching Award

Hannah Miller – National Society of Accountants, Coops Silver Pen Award.

Agriculture Ambassadors, continued

Student ambassadors are key to attracting prospective students to the college because the ambassadors have relevant testimonials from the different classes and activities in any of the 16 College of Agriculture majors. The ambassadors also represent the college when speaking with alumni and other stakeholders.

“The ambassadors are the ones that are experiencing college,” said Cherie Hodgson, agricultural economics academic coordinator. “They are the ones that are in the clubs and organizations. They are in the classroom and they experience the environment so they are our best representatives.”

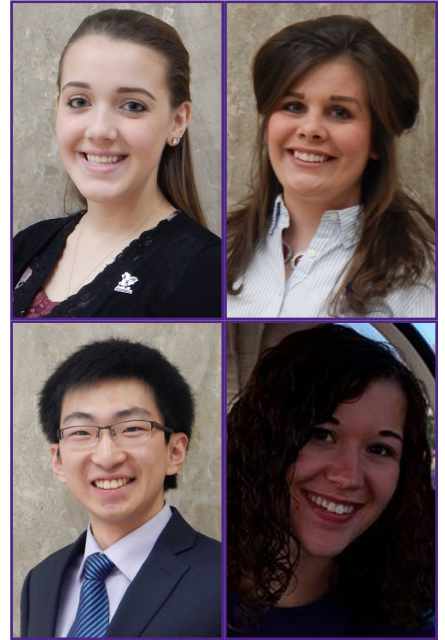
A prerequisite to the application process involves passing the 8-week College of Agriculture Training program aimed at teaching the students about the college’s departments and programs. The application process included a written application and a simulation of a situation students would potentially face as ambassadors followed by an interview.

Currently, the department is home to 26 of the 94 ambassadors. Hodgson attributes much of this participation to the personality of the students.

“Leadership is something that we promote in the department,” Hodgson said. “Think about it in the job market. They are going to be managers and presidents of organizations. They like the interaction with people, they see the value in leadership and they want to develop those leadership, management and communication skills because they’re going to need those in the workplace.”

Hodgson also sees a lot of value in the ambassador program because of how it benefits the students. She says they learn more about the college and have more opportunities to connect and interact with students, faculty and staff on campus as well as alumni and industry professionals. They practice time management and communication skills while coordinating activities and events.

More information about the ambassadors is available at <http://www.ag.k-state.edu/current-students/clubs-and-activities/ag-ambassadors/>.



Jobs Accepted by 2014 and 2015 Graduate Students

Graciela Andrango – National Institute of Agricultural and Livestock Research of Ecuador, Coordinator of the Agricultural Economics R&D Team.

Brady Brewer – University of Georgia, Department of Agricultural and Applied Economics.

William Callis – Topcon Precision Agriculture, Business Development Analytics Specialists.

Elizabeth Canales – Roll Global, Strategy Consultant.

Michelle Estes – Smithfield Farmland, Associate Category Planner.

Claire (Luensmann) Hilscher – Cargill, Feed Associate.

Garrett Lister – Innovative Livestock Solutions in Kansas, Risk Management Trainee.

Hannah Miller – Dow AgroSciences, Sales Trainee.

Cooper Morris – Rabo AgriFinance in Kansas, Credit/Relationship Analyst.

Veronica Pozo – Utah State University Department of Applied Economics.

Brian Sancewich – University of Florida, Postdoctoral.

Dustin Shearer – Gordon L. Brown & Associates Inc. in Pennsylvania, Engineering Trainee.

Student Organization Updates

Agricultural Economics & Agribusiness Club News

The Agricultural Economics and Agribusiness Club's officers are:

Michael Porter, president;

Nick Wineinger, vice president;

Cody O'Brien, secretary;

Shannon Maxwell, treasurer;

Casey Thyer and Nathan Smart, membership co-chairs;

Bryan Otott and Lucas Sudbeck, social co-chairs; and

Ryan Goetzmann, Ag Council representative.

Club advisors are Alex Shanoyan, assistant professor;

and Keith Harris, professor.



Club officers socialize with faculty and staff at the April 1 bake sale.

From April 30 – May 2, the club will take a spring trip to visit Gavilon and John Deere. These events encourage interaction with fellow students, department faculty and staff, and industry leaders.

NAMA Chapter News

The Kansas State University National Agri-Marketing Association (NAMA) is an organization dedicated to the professional development of its members. The club meets twice per month to discuss marketing tactics as well as help members prepare for their future careers. There is also a team that develops a marketing plan for a new agricultural product selected in the fall. The marketing plan is presented in the Student Marketing Competition at the national NAMA conference in April.

The club received a portion of the U.S. Department of Agriculture's Rural Development Grant called "Project 17". This semester they made the main focus of the club to reach out to the 17 poorest counties in Kansas by helping different small businesses make effective marketing plans for their products. The club joined forces in this endeavor with the Pi Sigma Epsilon Marketing Club from the College of Business. While this is a great opportunity for the companies, it also provides real-world marketing experience for KSU NAMA! Past experiences preparing and exhibiting in the NAMA Marketing Competition gave them a "leg up" as they strived to design effective marketing plans for these companies.

This year's NAMA competition was held

April 14-16, the team was very busy getting their marketing plan ready. This year's team made it to semi-finals in competition. The department's faculty and staff are very proud of their efforts. Please follow the club on Twitter [@KansasStateNAMA](#) and "Like" them on [Facebook at K-State NAMA](#) to keep up with all that they are doing!



Graduate Students in Agricultural Economics

Graduate Students in Agricultural Economics (GSAE) is an organization which promotes the academic, professional and social interests of all graduate students majoring in agricultural economics at Kansas State University.

The organization consists of more than 30 active members who meet once a month to discuss development opportunities, plan social events and establish professional relationships. In addition to monthly meetings, the GSAE hosts bi-weekly social events, monthly breakfast socials with the Agricultural Economics faculty and staff, and hosts brown bag seminars.

Each year, GSAE members compete in numerous professional competitions. This year there are two teams from GSAE competing in the International Food and Agribusiness Management Association's (IFAMA) case study competition in June in Minneapolis. At the Applied and Agricultural Economics Association (AAEA) and Western Agricultural Economics Association (WAEA) joint conference in July in San Francisco, students will participate in the case study and extension competitions and present their research papers and posters. Throughout the year, the members present at other professional and K-State events such as the Risk and Profit Conference.

GSAE strives to not only create a community amongst our graduate students but to also develop members' ability to apply economic knowledge and skills to real world agricultural issues.

Please visit the NEW website at <http://www.k-state.edu/agecongsae/> to learn more about club events, research and awards. Follow GSAE on Facebook at <https://www.facebook.com/ksugsae>.



Above: Graduate student, Weldensie Teklay, explains his current research project during the Brown Bag seminar on March 2.

Below: New assistant professor, Terry Griffin, discusses spatial econometrics during the Brown Bag seminar on March 2.



Student Updates

Department Hosts Zamorano Interns

Zamorano University, located just outside of Tegucigalpa, Honduras, is 2,500 miles from Kansas State University, equivalent to 47 hours by car or 11 hours by plane. For graduate interns Ricardo Auz, Ecuador; Lauren Benavidez, Nicaragua; and Paul Leiva, Honduras; the trip to Kansas has been well worth it.

The students' internships are part of a partnership between K-State and Zamorano. Many Zamorano alumni have spent time in K-State's Department of Agricultural Economics. The interns enroll in classes and work with professors on research projects.

"I think this is a good experience for us and also it opens doors to future interns from Zamorano to have the same experience," Benavidez said. "Also, working with grad students is good because they provide us with advice about how we can get a master's degree or how we can be better in some areas."

All three students share a course schedule that includes AGECE 599, Food and Agribusiness Management Strategy with Aleksan Shanoyan, assistant professor; and AGECE 712, Optimization Techniques in Agricultural Economics, with Jason Bergtold, associate professor. Shanoyan's class is a requirement for the students, however Bergtold's class was chosen based on interests and recommendations from former Zamorano interns.

Auz, whose interests are in stock markets, works with Christine Wilson, professor, to update research about the equity markets for some companies in the food industry.

Benavidez studies international trade with Tian Xia, associate professor, looking specifically at exports of hard red winter wheat to Asia and how the Asian culture uses the exported wheat.

Leiva, who is interested in studying production economics at K-State,

researches geographic information systems to study the distance from farms to ethanol plants in Kansas with Mykel Taylor, assistant professor, and Allen Featherstone, department head and professor.

The school system at Zamorano is set on a strict schedule of five classes in the morning followed by a specific lunch hour and work experience in the afternoon, whether it be in the fields, beef unit or elsewhere. The school provides the students with food and uniforms with laundry services so that the university serves as its own community. The students agree that despite the tight schedule at Zamorano, studying is much more time consuming at K-State.

Auz says the classes here take more focus, especially with the language difference. The emphasis on graduate student research at K-State rather than the emphasis on work experience at Zamorano also makes a big difference for the students because it presents a different type of learning opportunity.

"In my case, I studied in my same country," Leiva said. "I had been to the U.S. before but never for so long, so for me it's like a new experience to be with other people, other cultures and live in another country in a really

Continued on next page

Ricardo Auz, Lauren Benavidez and Paul Leiva (left to right) call Waters Hall home this semester during their graduate student internship, which is possible through a partnership between K-State and Zamorano University.



Zamorano Interns, continued

different way from how I would live in my country. It has been really helpful and I have learned lots of things.”

Both Auz and Benavidez said that responsibility is one of the biggest lessons they have gotten out of studying here at K-State. Auz said that in addition, timeliness had been a big adjustment for him because arriving early is not a custom in South America. Benavidez added that she has learned the importance of patience in reviewing long lists of data to compile her weekly reports.

The students found many differences in the communities as well. Coming from the closed Zamorano community to a community 50 times larger, the students have seen more opportunities for interaction, especially with the graduate students. They have spent time with the Graduate Students in Agricultural Economics for breakfast club meetings, bowling and brown bag lunch sessions. They also interacted with other Zamorano alumni on campus.

The students have had a great time at K-State so far. All echoed that the K-State community is definitely like a family, and that they would recommend the program to other Zamorano students.

“K-State should maintain this program because it is so helpful for us and it is a good opportunity for us,” Auz said. “The people here are so kind.”

Hendricks Earns Emerging Scholar Award



The [Southern Agricultural Economics Association \(SAEA\)](#) awarded [Nathan Hendricks](#), assistant professor in K-State's Department of Agricultural Economics, the Emerging Scholar award for 2015.

The award is granted to high-performing, early-career professionals who have had their terminal degree for less than seven years. The

department's faculty nominated Hendricks and he was selected based on his qualifications, presentation proposal and curriculum vitae sent in with his nomination.

Winners are invited to give an empirical or conceptual presentation in a symposia session at the SAEA annual meeting, which was Feb. 1- 4 in Atlanta this year. Presentations address issues on the frontier of knowledge in either research, extension or instruction. Winners are then recognized at the SAEA business meeting, which is in conjunction with the annual meeting, and receive a \$250 honorarium.

Agricultural Economics Faculty Promoted



Kansas State University faculty promotions were announced this spring and go into effect at the beginning of the 2015 fiscal year.

Earning promotion to full professor in the Department of Agricultural Economics are [Vincent Amanor-Boadu](#) (at top) and [Tim Dalton](#) (below). Amanor-Boadu began in this department in 2002 as a visiting scholar.



He specializes in agribusiness, business development and entrepreneurship. Dalton began in this department in 2008. He is currently the Director for the Feed the Future Innovation Lab for Collaborative Research on Sorghum and Millet. His areas of specialization are international economic development and agricultural production.

Christine Wilson Completes Food Systems Leadership Institute through the Association of Public and Land-Grant Universities

The Association of Public and Land-grant Universities honored Christine Wilson, professor in agricultural economics, for completing the Food Systems Leadership Institute's (FSLI) Executive Leadership Development Program along with the 21 other fellows in her institute cohort.

The FSLI is a 2-year program of the APLU designed for experienced leaders in academia, government, and industry. Through a dynamic curriculum that includes three executive style residential sessions, individual coaching, mentoring, and personal projects, the FSLI seeks to enhance personal leadership ability, develop skills and knowledge for organizational change, and broaden perspectives on integrated food systems.

"The FSLI was a tremendous professional development and growth opportunity for me," Wilson said. "It has been one of the most valuable experiences of my career."

FSLI is in partnership with North Carolina State University, Ohio State University and California Polytechnic State University-San Luis Obispo. Financial support from the W.K. Kellogg Foundation helped establish FSLI in 2006.

Learn more about FSLI at <http://www.fсли.org/>. For a full list of the fellows recognized at the meeting, visit <http://www.fсли.org/fellows.html#cohort-8>.



From left to right, Wilson is accompanied by William DeLauder, President Emeritus of Delaware State and the Chair of the APLU Food Systems Leadership Institute Commission; Ann Bartuska, Deputy Under Secretary for Research, Education & Economics; and Marshall Stewart, Director of the APLU Food Systems Leadership Institute for completing the 2-year program.

Spring Faculty Awards from the College of Agriculture



Bryan Schurle was announced as this semester's recipient of the Mugler Outstanding Teaching Award.

Christine Wilson was announced as this semester's recipient of the College of Agriculture Faculty of the Semester for Spring 2015.

Stay tuned to our upcoming newsletter for the full story!

Grants Announced to Support Economic Growth for Rural Communities

Funding from the U.S. Department of Agriculture's (USDA) National Institute of Food and Agriculture (NIFA) is expected to assist communities and regions in creating self-sustaining, long-term economic development through research and strategic planning.

Nearly \$14 million in grants was awarded. Three agricultural economists at Kansas State University and a fourth at Purdue University who will join the K-State department later this year, received more than \$2.5 million of those grant dollars to promote rural community development, economic growth and sustainability.

"These awards will allow our department to conduct research that can impact and improve the lives of rural Kansans," said Allen Featherstone, professor and head of the K-State Department of Agricultural Economics. "The research areas of water management, voting and buying behavior, international trade and global climate variability, and value-based supply chain production on farms have various impacts to our Kansas farmers and rural citizens. We want this research to impact their livelihood and rural communities in a way that makes them sustainable and continuously moving forward."

The projects for Kansas State, each totaling around \$500,000, include:

Aquifer depletion and water management

The project director for this grant is [Chatura B. Ariyaratne](#), research assistant professor. He will study how the reduced availability of irrigation water and rising pumping costs due to groundwater depletion make management decisions more critical for the sustainability of agriculture.

Other co-project directors from K-State's agricultural economics department include [Jeffery Peterson](#), [Nicolas Quintana Ashwell](#), [Nathan Hendricks](#), [Brian Briggeman](#) and [Bill Golden](#). [Bridget Guerrero](#) is a collaborator on the project from West Texas A&M University.

Understanding and forecasting changes in consumer demand for disaggregated meat products

According to [Glynn Tonsor](#), co-project director for this award, there is an increasing need to better understand changing consumer preferences for meat products. To date, most consumer research either uses very aggregated, nationally representative data or involves surveys at a single point in time that convey a "snap shot." This research will further develop and build upon existing consumer tracking surveys.

[Jayson Lusk](#), Oklahoma State University, is the project director for this award.

The role of international trade in adapting U.S. agriculture to increased global climate variability

[Nelson B. Villoria](#), an agricultural economist at Purdue University who will join the K-State faculty later this year, was awarded monies to study how more frequent extreme weather events are expected to increase the volatility of U.S. crop yields and the income stability of agricultural sectors.

Co-project directors for this award are from Purdue University. They include [Thomas Hertel](#), [Dev Niyogi](#), [Paul Preckel](#) and [Hao Zhang](#).

For more information about these awards, [view this newsletter online](#).

Impacts of values-based supply chains on farms

[Hikaru Hanawa Peterson](#), project director of this grant and K-State agricultural economics professor, will study the impacts of values-based supply chains (VBSCs) on small- to medium-sized farms.

Co-project directors for this grant include [Gail Feenstra](#), University of California-Davis; [Marcy Ostrom](#), Washington State University; and [Keiko Tanaka](#), University of Kentucky.

Voting and buying behavior

According to [Glynn Tonsor](#), project director for this award, the U.S. public increasingly sends mixed signals in their voting and buying behaviors resulting in 'unfunded mandates' that significantly add complexity to society's challenges of feeding a growing population.

Co-project directors for this award are [Kathleen Brooks](#), University of Nebraska-Lincoln; and [Bailey Norwood](#), Oklahoma State University.

Corey Fortin Earns Alumni Association Award

Corey Fortin, 2006 graduate, received the Alumni Association's Distinguished Young Alumni award for 2015.

Fortin is a commissioned officer of the U.S. Foreign Service with the United States Agency for International Development. He is stationed in Kampala, Uganda, where he works with rural farmers to innovate farming practices and fulfill USAID's mission to end extreme poverty. He returned to campus February 23-25 to visit classes, present about his work in Uganda, and mingle with K-State faculty.

Fortin's bachelor's degree in agricultural economics and animal sciences and industry came from K-State in 2006. He proceeded to receive a master's degree in agricultural economics from the University of Arkansas.

Fortin was extremely involved in



college. He was in Student Senate, Alpha Zeta agricultural honorary, Agriculture Council and Collegiate 4-H along with being an Agriculture Ambassador.

Since the Distinguished Young Alumni award began three years ago, an alumni of the department of agricultural economics has won the award each year. Matt Wolters ('03) won in 2014 and Justine Sterling ('07), who received a minor in agricultural economics, won in 2013.

Winners of the award are graduates younger than 35 who excel in their professions through service and leadership and contribute to their communities.

Josh Roe Named KDA's Assistant Secretary

The Kansas Department of Agriculture hired Josh Roe, 2003 graduate, as an assistant secretary to Jackie McClaskey, Secretary of Agriculture, in February.

Roe has served as the staff economist for KDA since 2013. Prior to that he worked in K-State's Department of Agricultural Economics, where his research and extension activities included water quality and quantity, agricultural finance, farm management and biofuels.

He earned a bachelor's degree from K-State with cum laude honors in agricultural economics with a specialty in finance and a minor in statistics. He has a master's degree in agricultural economics from Iowa State University.



John Niemann Earns Alumni Honor

John Niemann, 'agribusiness 93, was announced as the College of Agriculture Outstanding

Young Alumnus. Stay tuned to the next newsletter for full details!



Jake Worchester is the New 4-H Foundation CEO

Jake Worchester, 2001 graduate of agricultural economics, left his position as assistant secretary at the Kansas Department of Agriculture to join the 4-H Foundation. He is stationed in Manhattan, where his role with the 4-H Foundation began March 2.

Agriculture and 4-H are strongly entwined in Worchester's interests. He attributes his 4-H experience in Graham County as a key in much of his success, in addition to serving as K-State Student Body President in college.



Wayne Stoskopf Joins Senator's Staff



Kansas Senator Pat Roberts announced Wayne Stoskopf, 2010 agribusiness graduate, as one

of his senior staff selections. Stoskopf was named to the Professional Staff position for commodities, crop insurance and dairy on the Senate Committee on Agriculture, Nutrition and Forestry.

Prior to this announcement, Stoskopf worked as a Legislative Assistant for Senator Roberts handling agriculture, nutrition, and water issues since June 2012. He also served as the liaison between Robert's personnel and Agriculture Ranking Member offices. He previously worked for U.S. Congresswoman Lynn Jenkins handling agriculture policy and was a Field Director in central Kansas for U.S. Senator Jerry Moran's 2010 campaign. Stoskopf interned with Senator Moran the year before the campaign.

Stoskopf was born and raised on his family's wheat, sorghum and livestock farm near Hoisington, Kansas. While at K-State, he served as Student Government Vice President from 2009-2010 and was active in Blue Key, the senior leadership honorary, among other organizations.

[Read about Senator Robert's full selection of new staff members.](#)

Matt Wolters earns Huck Boyd Institute Leader of the Year Award for Agribusiness



Matt Wolters, 2003 graduate in agricultural economics, was selected as one of five Leaders of the Year for

2015 by the Huck Boyd National Institute for Rural Development. Efforts in outreach, innovation and service leadership determine the recipient for each of the five categories: agribusiness, business and entrepreneurship, community service, multicultural diversity and tourism, hospitality and retail.

Wolters' recognition came in agribusiness based on his role in leading SureFire Ag Systems Inc., a company that designs and manufactures solutions to apply fertilizer and chemicals to crops and fields throughout Kansas, the U.S. and the world. Based outside of Atwood, Kansas, Wolters, his brother, Josh, and friend, Blaine Ginther, opened Surefire Ag in July 2007.

Almost eight years later, the business has developed many custom products including Quickdraw, which is anticipated as one of the top five game changers of 2015 by Farm Industry News. Quickdraw is an automated, electronically controlled

spray tender system that mixes batches of crop inputs. SureFire has seen great success, employs 35 people, and has sold its products in 47 states and Canada.

In addition to SureFire Ag Systems, Wolters and his partners founded the Dream Big Education Foundation, which provides resources to enhance science, technology, engineering, agriculture, and math education in the Rawlins County USD 105.

Leaders of the Year were chosen by entrepreneurship students in the K-State College of Business and are based on the Huck Boyd Institute's Kansas Profile features during the past year. The institute is a partnership between K-State Research and Extension in Manhattan and the Huck Boyd Foundation in Phillipsburg, Kansas.

Wolters is a 2014 Distinguished Young Alumni and recipient of the Vance Publishing 2014 40 Under 40 Award. He was in Blue Key Honor Society and Student Governing Association and was an Agriculture Ambassador during college. Wolters has key roles in the Kansas FFA Foundation, Rawlins County Hospital Board and the Kansas Agricultural Rural Leadership Program.

Department Updates

ACCC Conference Celebrates 20 Year Milestone

The CEO Roundtable for Cooperative Managers celebrated its 20th anniversary in March with another strong program. In 1995, then Arthur Capper Cooperative Center (ACCC) Director, David Barton (professor emeritus) was approached by local cooperative managers about creating a new educational program for cooperative CEOs. He saw this as an exciting opportunity and reached out to Russ Nelson of CoBank who agreed to partner, and the CEO Roundtable was launched in 1996. The focus of the program has remained on providing these CEOs an educational opportunity where they can learn from industry experts, learn from each other, network and further develop as leaders of progressive, successful local cooperatives.

The strength of the program lies in a group of actively engaged CEOs who help develop the program each year. To ensure the topics are timely and relevant, Brian Briggeman, ACCC Director and associate professor (pictured at right addressing attendees of CEO Roundtable); and CoBank Regional Vice President, Alan Woodard; work closely with a planning committee comprised of CEOs who regularly attend the roundtable. Evidence of the CEO Roundtable's success can be found at right in a few of the comments from the CEOs and Board Chairs who attended the 2015 CEO Roundtable.

Three other educational programs have evolved out of the CEO Roundtable and additional opportunities await. CoBank continues to be an outstanding partner as they value the impact of strong education on the cooperative system. The ACCC looks forward to providing effective and relevant cooperative education to help the cooperative community meet the challenges of the future.

More information about the ACCC is available on its [website](#)



"The CEO Conference is one of the highlights of the year. I always look forward to the conference, the program speakers, and the discussions with fellow CEOs and Board leaders."

"Fantastic conference and very well planned. It was my first year and really enjoyed the program. I see the networking benefit and idea sharing as a huge plus."

"The best meeting I attend all year!"

2015 Risk and Profit Conference Focuses on Drought

The annual Risk and Profit Conference is scheduled for Aug. 20-21, 2015, at the K-State Alumni Center. The focus of the conference will be drought and water.

One of the featured speakers is Elwynn Taylor, a professor from Iowa State University. Taylor specializes in Ag Meteorology with a vision of mega-trends in technology, climate and society that opens the horizons of our enigmatic world. His extensive knowledge and understanding of the world around us enlightens and entertains. His insightful presentations are immediately useful in the management of business and life. Few can

explain the complexities of our world in a manner as clear, concise, and pleasant, as does Taylor, who received his doctorate in Biology from Washington University in St. Louis. Scholars internationally recognize his expertise in interactions of the biological and physical environment.

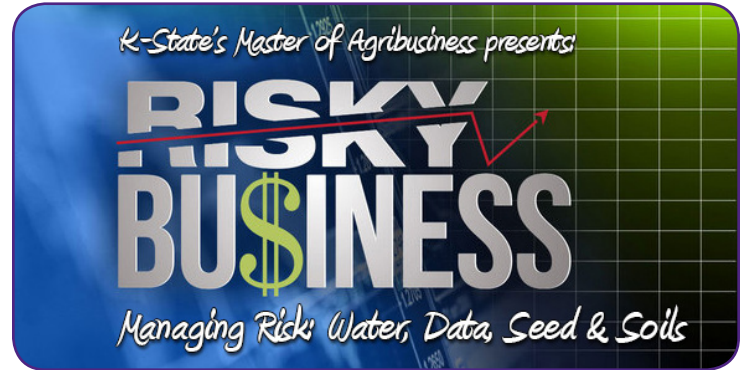
Further conference details and registration information will be announced later this spring. Check http://agmanager.info/events/risk_profit/2015/default.asp for those details and other extension events. Rich Llewelyn is also available to contact at 785-532-1504 or rwl@ksu.edu.

Master of Agribusiness Professional Development Event: Risky Business!

The Master of Agribusiness (MAB) program is pleased to announce the dates for its 7th Professional Development and Alumni Reunion Event. The event, "Risky Business: Managing Risk," will be Sept. 17-19, 2015 in Manhattan, Kan. The event will include sessions on multiple angles in managing risk and possible tours of the K-State campus, Biosecurity Research Institute (BRI) and O. H. Kruse Feed Technology Innovation Center, as well as the opportunity to network with classmates and industry partners. It will also include a pre-game tailgate before the K-State vs. Louisiana Tech football game on Saturday, Sept. 19.

Not just for MAB students and alumni, the event is open to all interested individuals in the food, animal health and agribusiness industry.

Be watching for more information about speakers, sessions and registration on MAB social media channels and the website (www.mab.ksu.edu). Registration materials will be available on the website in late July/early August. Room reservations must be made through the Holiday Inn at the Campus by Friday, Aug. 28. For rooms call 785-539-7531 and mention KSU Master of Agribusiness or 'MAB'.



K-State Farm Bill Team Reaches More Than 4,000 Kansans

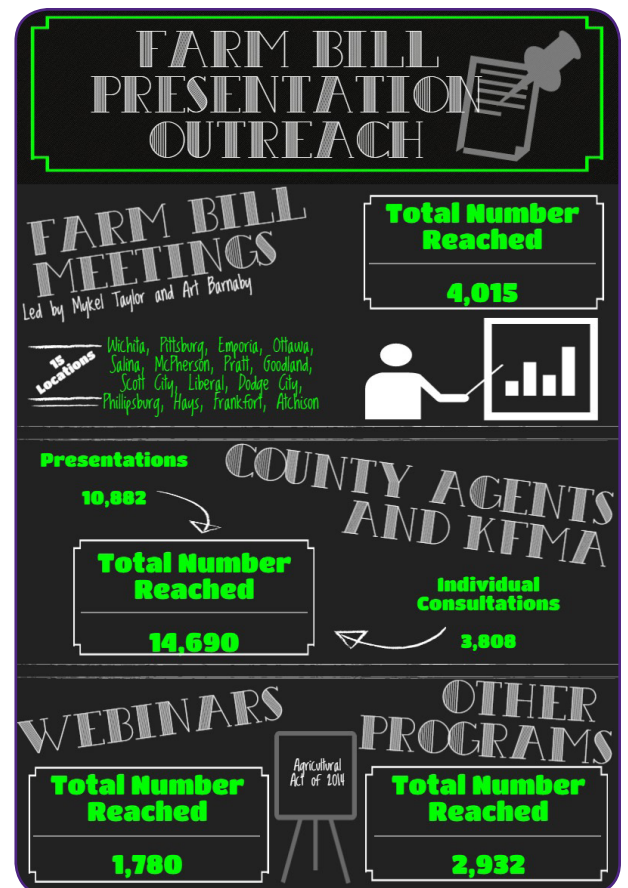
Farm producers and ranchers are facing many decisions regarding the Agricultural Act of 2014, also known as the 2014 Farm Bill.

To help with this decision-making process, K-State Research and Extension held meetings throughout the state in January and February. Recordings of presentations are available online.

"More than 4,000 people attended the meetings, with many attending more than one to improve their understanding," said Mykel Taylor, assistant professor of the Kansas State University Department of Agricultural Economics. "Surveys at these meetings asked people to rate the value of the information presented on the programs details and the tool. An average of 89% of attendees rated the information as Valuable or Very Valuable on a four point scale ('Not Valuable', 'Somewhat Valuable', 'Valuable', or 'Very Valuable')."



The Farm Bill deadline closed Tuesday, April 7. To view full coverage of the videos and updates from the K-State Farm Bill team visit the AgManager website.



Agricultural Economics Fund Foundation Spotlight

Agricultural Economics Emeritus Faculty and Friends Scholarship fund – A Q&A Session with Fred Delano

The Agricultural Economics Emeritus Faculty and Friends Scholarship (EFFS) fund is established by departmental emeritus faculty to provide scholarships for graduate students or prospective graduate students, or undergraduate student admitted to the graduate program in agricultural economics at Kansas State University whose graduate program benefit the Kansas agricultural economy.

Amanda Erichsen: As an Emeritus Faculty of this department, what importance does this fund represent towards strengthening the caliber of students that graduate from our degree programs?

Fred Delano: The value is at the margin, to use a term from Ag Econ 101. The Founders of the EFFS fund envisioned providing the Department with a competitive edge financially to attract top graduate school candidates to enhance our nationally recognized K-State program. The Founders also recognized a desire of non-alumni to 'give back' to a department and an institution providing a career of benefits.

AE: How will the knowledge enrichment funded by this support, provide a better outlook for the Kansas agricultural economy?

FD: Annually, the department provides beneficial Kansas agriculture research activity by Fund recipients to the donors. An accumulation of research results vindicate the premise that added financial funds are providing a competitive edge for attracting the top minds to K-State.

AE: What do you want students that receive this scholarship to understand about the importance and expectations of this scholarship?

FD: Agriculture is vitally important to Kansas and to feeding a hungry world. It is an honor to be selected to receive EFFS funding. The honor signifies that we believe in the student, but also comes with elevated expectations.

AE: What do you think potential donors should know about what this scholarship can do for students that receive this honor and for the Kansas agricultural economy? Why should they give towards this fund?

FD: The fund provides a direct cause and effect tangible benefit. The fund allows donors who have benefited career-wise from a nationally recognized department and university to give back to ensure continued and enhanced success by winning the competition for top quality graduate student. The benefit of the contribution is recognized in a relative short period of time.

AE: Please provide any other comments regarding the importance of this fund and what it means to the students that receive it and why we need further donor support.

FD: Public funding continues to decline in Kansas and Nationally. It is essential that private funding fill the void. KSU is in direct competition for top quality graduate students, not only in Kansas, but nationally. For the department and university to maintain and enhance the competitive edge, it is essential to be in the running to attract the best and brightest to KSU.

For information about the opportunity to give to the Department, please contact Allen Featherstone at afeather@ksu.edu or 785-532-4441.

<https://www.found.ksu.edu/agriculture/onlinegiving.html>

Facebook

Department: [facebook.com/kstateagecon](https://www.facebook.com/kstateagecon)

Master of Agribusiness Program: [facebook.com/KstateMAB](https://www.facebook.com/KstateMAB)

AgManager.info: [facebook.com/AgManager.info](https://www.facebook.com/AgManager.info)

Arthur Capper Cooperative Center: [facebook.com/KStateACCC](https://www.facebook.com/KStateACCC)

Twitter

Department: [@kstateagecon](https://twitter.com/kstateagecon)

Master of Agribusiness Program: [@ksumab](https://twitter.com/ksumab)

AgManager.info: [@AgManagerInfo](https://twitter.com/AgManagerInfo)

Arthur Capper Cooperative Center: [@ksuaccc](https://twitter.com/ksuaccc)

Dan O'Brien Grain Markets: [@KSUGrains](https://twitter.com/KSUGrains)

Blog sites

Department: kstateagecon.wordpress.com

Master of Agribusiness Program: ksumabblog.blogspot.com

Dan O'Brien's "Focused on Grains": ksugrains.wordpress.com

Center for Risk Management Education and Research: crmerstudents.wordpress.com

Study Abroad: ageconstudyabroad.wordpress.com

YouTube

Department: [youtube.com/kstateagecon](https://www.youtube.com/kstateagecon)

AgManager.info: [youtube.com/user/agmanagerinfo](https://www.youtube.com/user/agmanagerinfo)

Let's get social!

Save the Date for the Scholarship Banquet & Tailgate Weekend: September 18 & 19

Scholarship Banquet:

When: Friday, September 18, 2015

Where: Bluemont Hotel

Tailgate

When: Saturday, September 19, 2015

Where: Cat Town

More information will be announced this summer. If you have questions, please contact Judy Maberry at judym@ksu.edu or 785-532-4493. <http://www.ageconomics.k-state.edu/alumni-resources/banquet/index.html>

Upcoming events

May 2015

- 1 • [Ag Alumni Scholarship Golf Tournament](#), click here for more information including how to register
- 2 • College of Agriculture Ag Alumni Award Recognition Reception. Begins at 4:00 p.m. at the Alumni Center
- 2 • College of Agriculture New Graduate and Alumni Dinner. Reception begins at 5:30 p.m. and Dinner begins at 6:00 p.m. at the Alumni Center
- 15 • [Graduate School Commencement](#), 1:00, Bramlage
- 16 • [College of Agriculture Undergraduate Commencement](#), 2:30, Bramlage

July

- 21-22 • [Emerging Leaders: Building A Cooperative Finance Foundation](#), Bluemont Hotel

August

- 19 • [ACCC Symposium](#), K-State Alumni Center
- 20-21 • [Risk and Profit Conference](#), K-State Alumni Center

September 2015

- 17-19 • [MAB Risky Business Professional Development Session](#), Risky Business; and Alumni Reunion
- 18 • [Department Scholarship and Awards Banquet](#) at the Bluemont Hotel, 6:00 p.m.
- 19 • [Department Alumni Tailgate](#) at Cat Town

For a full list of our events and more information, please visit www.ageconomics.k-state.edu/events/index.html

For more information about the Department or this e-newsletter, please contact Amanda Erichsen at 785.532.6994 or aerichsen@ksu.edu.

Article contributions by:
Amanda Sales, Communications Assistant, Sophomore in Agricultural Communications & Journalism; and
Elaine Edwards, K-State Research and Extension News Media Services

Department of Agricultural Economics
342 Waters Hall
Kansas State University
Manhattan, KS
66506-4011
785.532.6702